



GOOD MORNING

Have Good Trading Day

TUESDAY



Price is what you pay.  
Value is what you get.

- Warren Buffet



## MARKET PULSE

### INDIAN INDICES

NAME	CMP	NET CH.	%
SENSEX	25623	-537	-2.05
NIFTY	7791	-171	-2.16

### INDIAN ADR'S

SYMBOL	CLOSE	GAIN/ LOSS %
DRREDDY	45.65	-1.38
HDFCBANK	59.86	-2.82
ICICIBK	7.64	-2.43
INFY	16.24	-3.04
TATAMOTOR	28.33	-3.87
WIPRO	11.20	-2.95

### FII AND MF ACTIVITY

SYMBOL	In Crs.
FIIs Eq (Provisional)	-667.15
FIIs Index Future	-39.54
FIIs Index Options	4125.42
FIIs Stock Future	-259.42
FIIs Stock Options	25.39
DII's Eq (Provisional)	-222.79

### CURRENCY

RBI RATE	04-JAN-2016
RUPEE - \$	66.4623
EURO	72.3907
YEN 100	55.6500
GBP	97.9455

## MARKET PULSE

### GLOBAL INDICES

NAME	CMP	NET CH.	%
DOW	17148	-276	-1.58
NASDAQ	4903	-104	-2.08
NIKKEI	18527	+76	+0.41
HANG SENG	21301	-26	-0.12
SGX NIFTY	7825	+23	+0.29

### WORLD COMMODITIES

FUTURE	U\$\$	CHANGES
CRUDE	36.99	+0.23
NATURAL GAS	2.289	-0.045
GOLD	1075.3	+0.1
SILVER	13.925	+0.084
COPPER	2.0820	+0.0025

### WORLD EVENTS

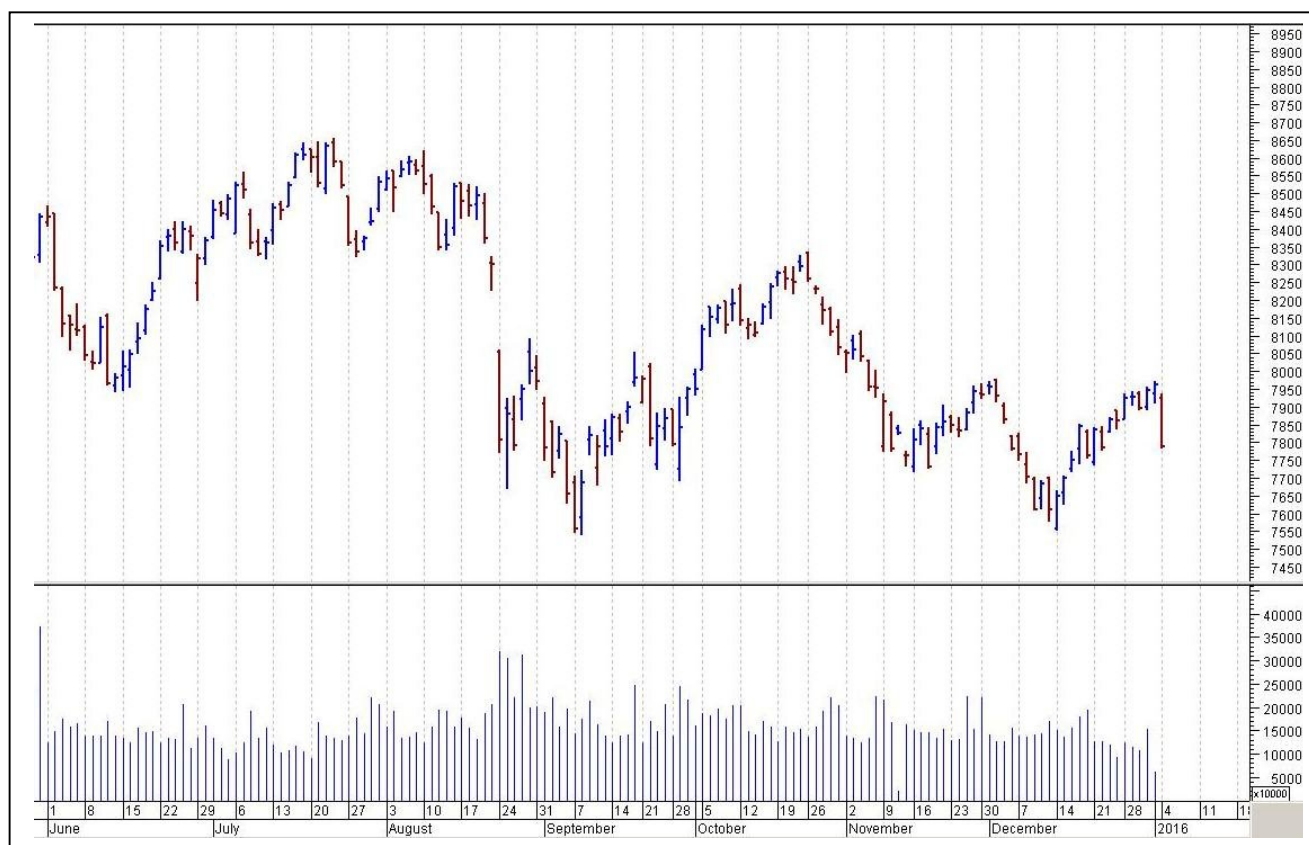
- US: Total Vehicle Sales
- UK: Construction PMI

## TOP STORY

- IFCI To divest partial stake in Stock Holding Corporation Of India.
- Eros Now enters into platform & content deal with Idea Cellular.
- Welspun Corp Gets Rs 100.5 crore notice for Anjar Manufacturing unit from Gujarat government
- JSW Steelsays Karnataka HC rules partial relief on payment of forest development tax
- RBI says FIIs/RFPs can now invest up to 49 percent in Siti Cable Network
- L&T Infotech receives Sebi's approval to float an IPO worth Rs 2,000 crore
- Kellton Tech Solutions board approved allotment of 30 lakh warrants to promoters & non promoters
- Gravita India ventures into business of plastic recycling
- Grasim completes merger with Aditya Birla Chemicals
- Texmaco Rail Executes acquisition of 55 percent stake in Bright Power Projects



## NIFTY CHART



## MARKET COMMENTARY

Monday's session turned out to be a awful for the Indian equity benchmarks which tumbled like a 'house of cards' and went on to breach various key technical levels in the over two percent freefall. The frontline gauges which appeared to be on a southbound journey, desperately kept searching for a bottom through the session, but to no avail as the journey only halted with the session's close. Sentiments got undermined after the report that Indian manufacturing activity contracted in December for the first time in more than two years, hurt by softening domestic demand, adding pressure on the central bank to ease policy. Nikkei's Manufacturing Purchasing Managers' Index, compiled by Market, fell to a 28-month low of 49.1 in December from November's 50.3. For today's trade Nifty likely to trade in the range between 7820 – 7840 in the upper side and 7770 – 7750 in the lower side

### MARKET LEVELS

	CMP	SUPPORT LEVELS				RESISTANCE LEVELS			
NIFTY	7791	7770	7750	7730	7710	7820	7840	7860	7890
USDINR	66.82	66.7	66.65	66.55	66.4	6.95	67.05	67.15	67.2





### FUTURES CORNER

SCRIPS	CLOSE	SUPPORT	TARGET		REMARKS
		STOP LOSS	T1	T2	
BIOCON	537	534	542	545	TRADING CALL
CADILAHAC (SELL)	322.65	326	314	305	TRADING CALL
TATAMOTOR(SELL)	378.25	382	372	365	TRADING CALL

### EQUITY CORNER

SCRIPS	CLOSE	SUPPORT	TARGET		REMARKS
		STOP LOSS	T1	T2	
NEXTMEDIA	19.6	19	21	22.5	TRADING CALL
JVLAGRO	24.35	23.5	26	27.5	TRADING CALL

### DELIVERY BASED CALL / INVESTMENT CALL

SCRIPS	CMP	SUPPORT	TARGET		REMARK
		STOP LOSS	T1	T2	

### BULK DEALS (BSE)

SCRIP	CLIENT NAME	BUY/SELL	QUANTITY	PRICE
SYNCOM	AVATAR INDIA OPPORTUNITIES FUND	S	300,000	11.15

### BULK DEALS (NSE)

SCRIP	CLIENT NAME	BUY/SELL	QUANTITY	PRICE
SUBEX	QVT MAURITIUS WEST FUND-FCCB A/C	SELL	3250000	12.92
SYNCOM	M/S AVATAR INDIA OPPORTUNITIES FUND	SELL	600000	11.15
ROHLTD	ASHISH RAMCHANDRA KACHOLIA	BUY	278178	87.82

### SCRIP'S IN F&O BAN

(To resume for normal trading below 80% of market wide limit required)

NIL



NIFTY 50 STOCKS: SUPPORT & RESISTANCE						
Symbol	Close	Support 1	Support 2	Pivot Point	Resistance1	Resistance2
ACC	1344	1325	1305	1351	1371	1397.6
ADANIPTS	258	254	251	260	264	269.9833
AMBUJACEM	202	200	197	203	205	208.0167
ASIANPAINT	881	871	861	882	892	902.4
AXISBANK	438	433	428	441	446	453.9
BAJAJ-AUTO	2483	2457	2430	2502	2529	2574.2833
BANKBARODA	151	148	145	154	157	161.8
BHARTIARTL	327	319	311	329	337	346.8667
BHEL	165	163	160	167	169	173.3333
BOSCHLTD	18816	18564	18312	18992	19244	19671.8833
BPCL	891	879	866	888	900	909.15
CAIRN	138	136	133	140	142	146.1333
CIPLA	646	639	632	646	653	660.6833
COALINDIA	330	326	322	332	336	341.2
DRREDDY	3056	3026	2995	3073	3103	3150.3
GAIL	360	354	348	364	370	380.8333
GRASIM	3657	3599	3541	3691	3749	3841.0167
HCLTECH	846	837	829	846	855	863.6167
HDFC	1217	1201	1186	1228	1243	1269.4
HDFCBANK	1071	1064	1058	1074	1080	1090.1
HEROMOTOCO	2638	2623	2608	2646	2661	2683.8667
HINDALCO	81	79	77	82	84	87.85
HINDUNILVR	859	851	842	860	868	877.1667
ICICIBANK	256	253	250	257	260	263.8833
IDEA	136	133	130	138	140	145.3
INDUSINDBK	934	923	913	943	953	972.5667
INFY	1079	1069	1059	1086	1096	1112.2
ITC	325	322	320	324	327	328.8
KOTAKBANK	705	697	689	712	720	735.2
LT	1256	1243	1230	1266	1280	1303.05
LUPIN	1795	1775	1755	1806	1827	1857.9167
M&M	1243	1234	1225	1248	1257	1271.7
MARUTI	4581	4549	4518	4603	4635	4688.3833
NTPC	143	142	140	144	146	148.5333
ONGC	238	234	230	240	243	248.65
PNB	113	111	110	114	116	118.6
POWERGRID	141	139	137	142	144	146.1833
RELIANCE	995	983	972	999	1011	1025.7
SBIN	221	218	216	223	225	229.4667
SUNPHARMA	799	789	779	805	815	831.3667
TATAMOTORS	377	368	359	384	393	409.1167
TATAPOWER	68	67	66	69	70	70.95
TATASTEEL	257	252	248	258	262	267.8333
TCS	2370	2352	2335	2383	2400	2431.1667
TECHM	516	507	498	514	523	530.5333
ULTRACEMCO	2749	2710	2670	2769	2809	2868.1833
VEDL	89	87	85	90	92	95.5167
WIPRO	558	556	554	558	560	561.9
YESBANK	706	695	683	712	723	741.05
ZEEL	422	418	414	425	429	436.55



## NEWS & RUMOURS:

- Gold (Spot Dollar) major support = \$1047/\$1015 & Resistance = \$1105/\$1132.
- Crude oil range->\$33 to \$43.
- Global Stocks Tumble Following Shanghai's 7% Crash: - Financial markets are starting 2016 on a bleak note and China is at the center of it. Stocks crumbled around the world, with global equities heading for the worst opening day of trading in at least three decades.
- China Halts Stock Trading After 7% Rout Triggers Circuit Breaker: - The worst-ever start to a year for Chinese shares triggered a trading halt in more than \$7 trillion of equities, futures and options, putting the nation's new market circuit breakers to the test on their first day.
- U.S. construction spending posts first decline in nearly 1-1/2 years: - U.S. construction spending fell for the first time in nearly 1-1/2 years in November as a drop in nonresidential investment offset an increase in housing outlays, pointing to moderate economic growth in the fourth quarter.
- Gold kicks off 2016 with strong gains amid Saudi Arabia-Iran drama: - Gold kicked off the New Year with strong gains on Monday, amid mounting geopolitical tensions in the Middle East after [Saudi Arabia cut diplomatic ties with Iran](#) over the weekend.
- Copper slides 3% as China factory activity shrinks again in December: - Copper prices fell sharply on Monday, as the release of weak Chinese manufacturing activity data weighed as investors returned to the markets after the long New Year weekend.
- Oil rises as market ponders scale of future Iran exports: - Oil prices rose on Monday after a breakdown in diplomatic ties between Saudi Arabia and Iran that some speculated could result in supply restrictions, although gains were tempered by data showing some of Asia's largest

## TRENDS & OUTLOOK – DATE: 05- Jan- 2016

### PRECIOUS METALS:

COMMDITY (MCX)	S2	S1	PIVOT POINT	R1	R2
GOLD (Feb)	24800	25025	25330	25655	25800
SILVER (Mar)	31300	32500	33700	34800	35786

### BASE METALS

COMMDITY (MCX)	S2	S1	PIVOT POINT	R1	R2
COPPER (Feb)	300	304	310	316	320
ZINC (Jan)	99.70	102.20	104.70	106.90	109.20
LEAD (Jan)	112.30	114.75	117.25	120.20	123.45
NICKEL (Jan)	543	559	574	592	609

### ENERGY

COMMDITY (MCX)	S2	S1	PIVOT POINT	R1	R2
CRUDE OIL (Jan)	2270	2400	2520	2599	2675
NATURAL GAS (Jan)	142	148	154	159	165

### DATE TALKS : TODAY'S ECONOMIC DATA :

Construction PMI of GBP, Total Vehicle Sales.





**Registered Office**

Indira House, 3rd Floor, 5 Topiwala Lane,  
Opp. Lemington Road Police Station, Grant Road (East), Mumbai - 400007.

**Corporate Office**

'Ramavat House' E-15, Saket Nagar, Indore - 452018 (M.P.)

**Customer Care**

Tel: +91-731-4097170/ 71/ 72/ 73/ 74 M. +91 93031 72345

Email: [customercare@indiratrade.com](mailto:customercare@indiratrade.com) [www.indiratrade.com](http://www.indiratrade.com)



**INSTITUTIONAL DEALING UNIT**

Africa House, 5, Topiwalla Lane, Lamington Road, Mumbai, 400007

Tel: +91 22 30080678 Fax : +91 22 23870767 Email : [ie@indiratrade.com](mailto:ie@indiratrade.com)

**Disclaimer**

This report is for private circulation within the Indira Group. This report is strictly confidential and for information of the selected recipient only and may not be altered in any way, transmitted to, copied or distributed, in part or in whole, to any other person or to the media or reproduced in any form. This report should not be construed as an offer or solicitation to buy or sell any securities or any interest in securities. It does not constitute a personal recommendation or take into account the particular investment objectives, financial situations, or any such factor. The information, opinions estimates and forecasts contained here have been obtained from, or are based upon, sources we believe to be reliable, but no representation of warranty, express or implied, is made by us to their accuracy or completeness. Opinions expressed are our current opinions as of the date appearing on this material only and are subject to change without notice.